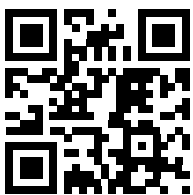


**Make more  
out of  
façades!**

With Pilkington  
**Profilit™!**  
Simply  
combine!



Pilkington **Profilit™**  
Profiled glass with system

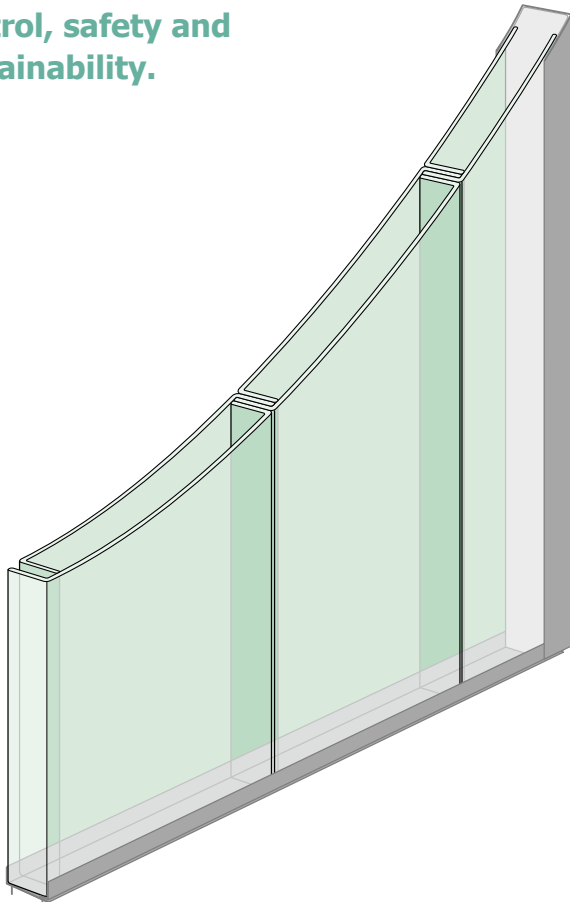


Pilkington **Profilit™** Profiled glass with system: Combines function and economy with aesthetics.

Pilkington **Profilit™** is constantly being developed – particularly by intensive application technology support – and in line with national and international standards and guidelines. There is an extremely **wide variety of products and a broad range of applications. From strictly functional constructions to architectural highlights.**

In particular, the focus here is very much on modern and high-quality solutions for all types of façade applications. Renowned architects make use of the creative possibilities offered by Pilkington **Profilit™** for their designs.

Pilkington **Profilit™** meets requirements in terms of thermal insulation, solar control, noise control, safety and sustainability.



The new profiled glass generation: Pilkington **Profilit™** triple and multi-layered glazing

Once again, these new Pilkington **Profilit™** systems greatly broaden the variety of possible combinations and applications. **With  $U_g$  values of 1.2 to 0.61 W/m<sup>2</sup>K, they represent a new generation of profiled glass!**

For example,  $U_g$  values of down to 0.61 W/m<sup>2</sup>K, g values down to 0.19 or noise control values of up to  $R_w = 57$  dB are possible depending on the configuration.

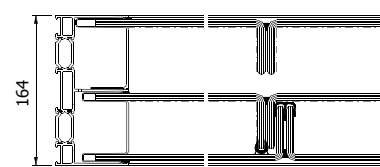
**NEW: Pilkington Profilit™ "one in 2"**



$U_g$ value	g value
1.3 W/m <sup>2</sup> K to 1.2 W/m <sup>2</sup> K	0.51 to less than 0.30

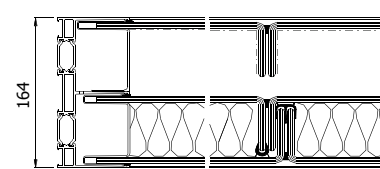
Improved thermal insulation, improved solar control, high translucence, good noise control, high installation lengths, simple installation

**NEW: Pilkington Profilit™ "2 plus one"**



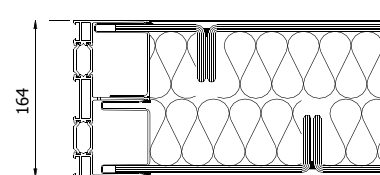
$U_g$ value	g value
0.92 W/m <sup>2</sup> K	0.51 to 0.31

Improved thermal insulation, improved solar control, high translucence, very good noise control, interesting installation lengths, simple installation



$U_g$ value	g value
up to 0.80 W/m <sup>2</sup> K	less than 0.25

Very good thermal insulation, very good solar control, very good noise control, interesting installation lengths, simple installation



$U_g$ value	g value
up to 0.73 W/m <sup>2</sup> K	down to 0.19

Very good thermal insulation, very good solar control, very good noise control, simple installation

When you combine Pilkington **Profilit™**:  
These are the results!



New town hall in Rochdale, GB

Pilkington **Profilit™** K 25/60/7 Macro T-H OW as an insulating façade, sun screen louvers and indoor applications



Migros shopping centre, Romanel, Switzerland

Pilkington **Profilit™** K 25/60/7 Slim Line as a back-lit cold façade



Queens Library, Brooklyn, NYC, USA

Pilkington **Profilit™** K 25/60/7 Plus 1.7 T-H as an insulating façade, with and without TIM and as a cold façade



Felix Faure residential and commercial building, Paris, France

Pilkington **Profilit™** K 25/60/7 Opal OW as a cold façade, and as privacy screens and weather protection for the arcades



Warndtgymnasium, Ludweiler, Germany • Pilkington **Profilit™** K 25/60/7 and K 25/60/7 T-H with TIM as a cold and insulating façade

This publication provides only a general description of the products. Further, more detailed, information may be obtained from your local supplier of Pilkington products. It is the responsibility of the user to ensure that the use of these products is appropriate for any particular application and that such use complies with all relevant legislation, standards, codes of practice and other requirements.

To the fullest extent permitted by applicable laws, Nippon Sheet Glass Co., Ltd. and its subsidiary companies disclaim all liability for any error in or omission from this publication and for all consequences of relying on it.

Pilkington and "Profilit" are trademarks owned by Nippon Sheet Glass Co., Ltd. or a subsidiary thereof.



[www.pilkington.com/CE](http://www.pilkington.com/CE)



**Bauglasindustrie GmbH**

Hüttenstraße 33 66839 Schmelz

phone +49 (0)6887 303 0 fax +49 (0)6887 303 45

e-mail [profilbauglas@nsg.com](mailto:profilbauglas@nsg.com)

[www.pilkington.com](http://www.pilkington.com)